



# Technical Bulletin IMA-WS

## Water Sensor Replacement

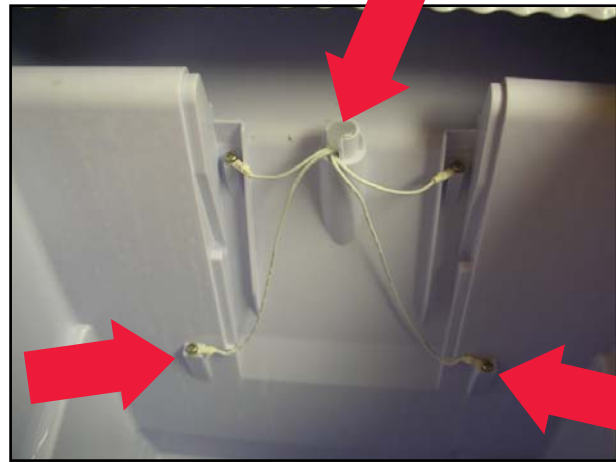


### STEP 1



Remove water sensor cover plate from inside the IMA.

### STEP 2



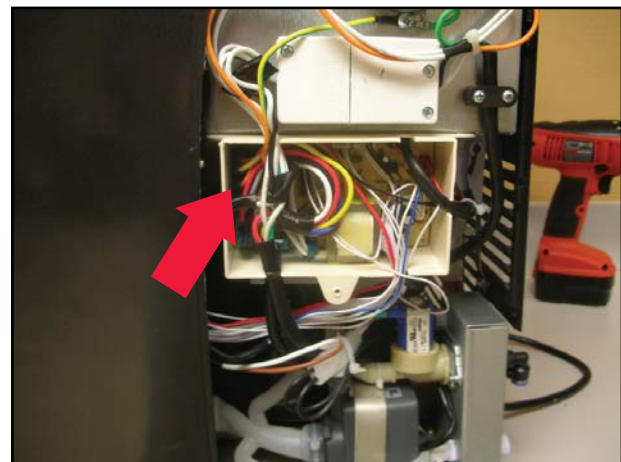
Remove screws from water sensors. Remove a portion of the silicon from the tube for the water sensors. (To avoid leakage you will have to reseal the tube with some Styrofoam or hot glue when you are done.)

### STEP 3



Remove right side cover panel and control board cover plate.

### STEP 4



There is a white plastic wire harness located to the left of the control board box, above the back of the compressor, carefully turn it towards you to free the wires.

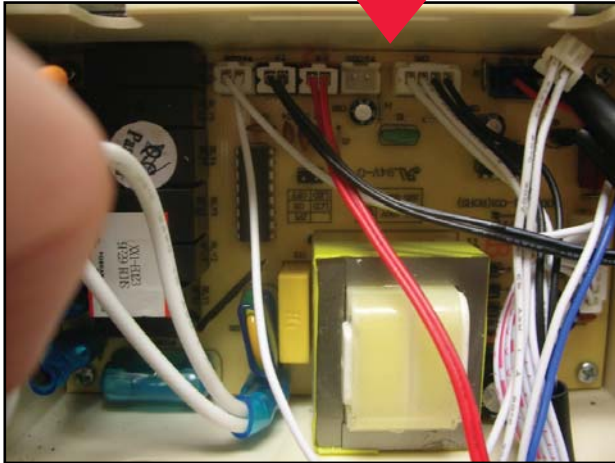


# Technical Bulletin IMA-WS

## Water Sensor Replacement



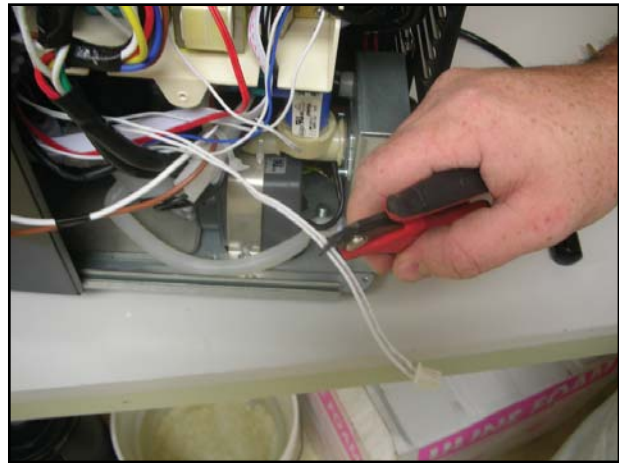
### STEP 5



Disconnect the sensor you are replacing from the control board.

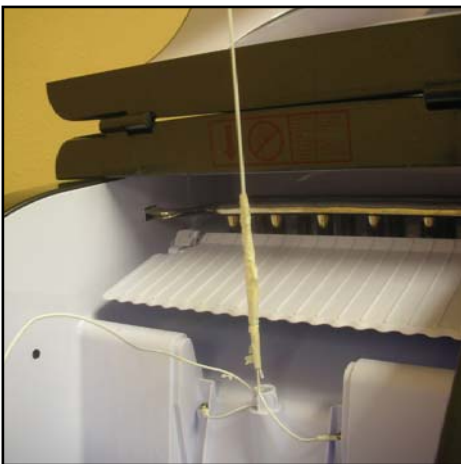
- A. Top water sensor is marked- water1 on the control board.
- B. Bottom water sensor is marked- water0 on the control board.

### STEP 6



Cut the old sensor wire and tape the new water sensor to one of the old wires, one ring terminal above the other. It needs to be secure but not bulky. Pull new sensor wire thru wire tube.

### STEP 7



Once you have pulled the new sensor thru remove tape and screw sensor wires into position. Replace sensor wire cover.

### STEP 8



Plug new sensor wire into control board, replace board cover and side panel.