



Phone: 877-KoolTek

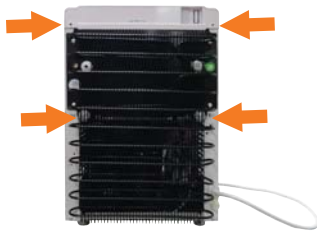
Fax: 813-298-1993

[www.kooltekcoolers.com](http://www.kooltekcoolers.com)

## Technical Bulletin G2-4

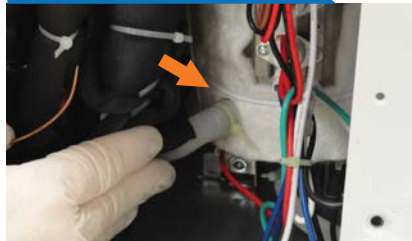
### Hot Tank Removal Instructions for Side Handle Units

#### STAGE 1



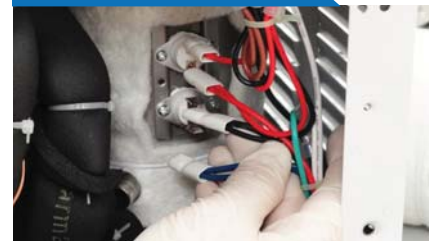
1. Remove the 2 screws holding the coil and the 2 screws holding the lid. Gently move the coil to the side.

#### STAGE 2



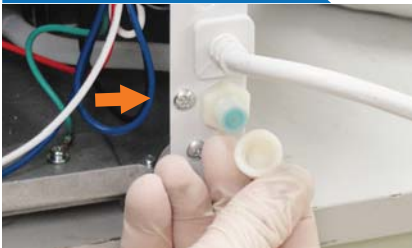
2. Remove the silicone tube from the side of the hot tank.

#### STAGE 3



3. Remove wires from stats. Keep track of wire locations for installation of the new tank.

#### STAGE 4



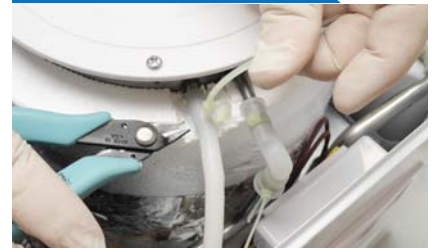
4. Disconnect drain line by removing cap, nut and screw.

#### STAGE 5



5. Remove the 2 screws holding the hot tank to the base.

#### STAGE 6



6. Remove the top lid of the cooler and detach the overfill tube from the stem.

#### STAGE 7



7. Cut the silicone sleeve from the faucet pipe.

#### STAGE 8



8. Remove hot tank.  
NOTE: Be sure to remove the 2 wires from the bottom of the tank.

#### IMPORTANT:

When reattaching the drain line to the cooler body be sure the stem fits into the power cable groove located on the inside lip of the cooler body.

